



Western Health

# Pharmacy Internship at Western Health

 Western Health

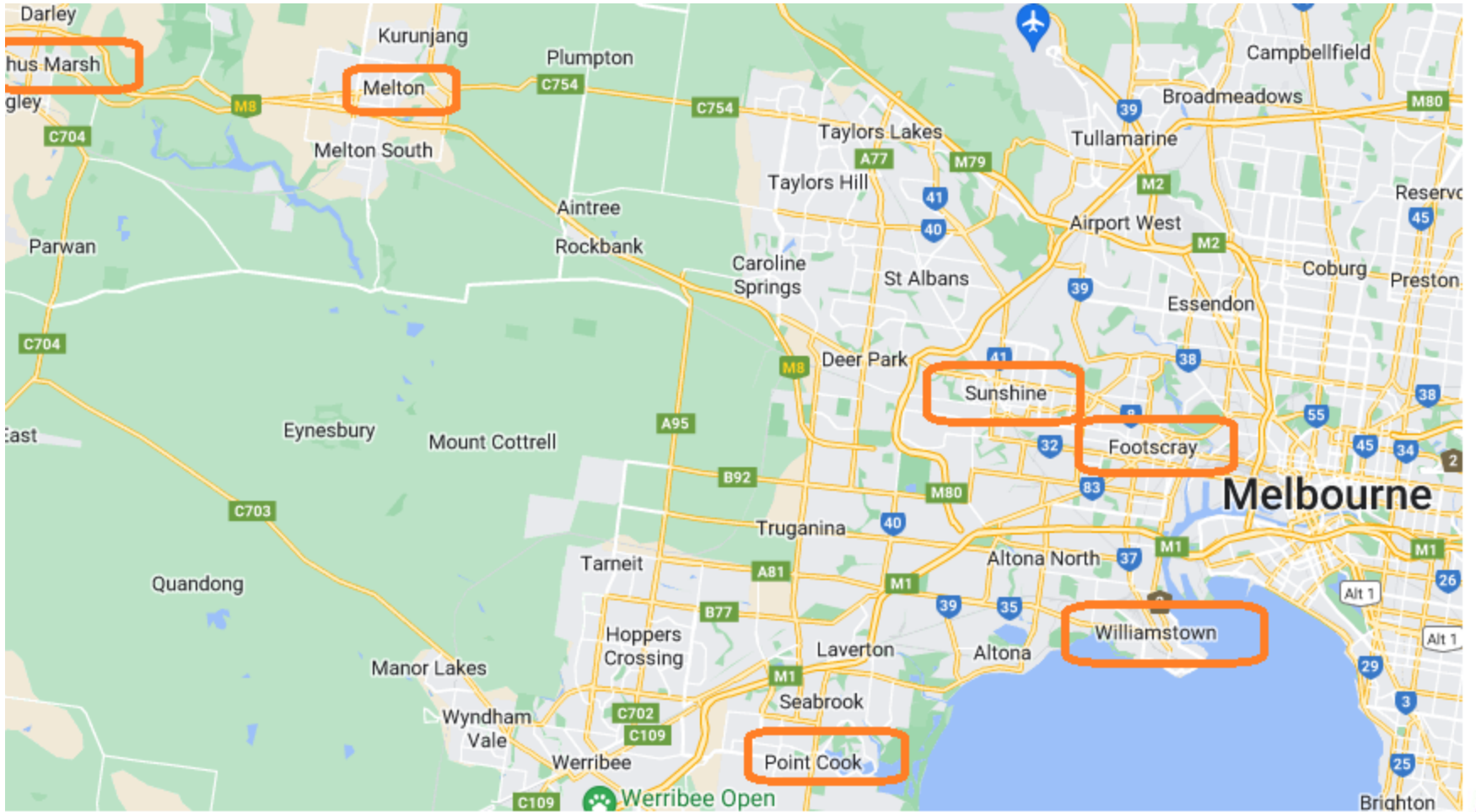
*Together, caring for the West, our patients,  
staff, community and environment.*



**PHARMACY INTERNSHIP  
PROGRAM**



*Compassion  
Accountability  
Respect  
Excellence  
Safety*



# About Western Health

- 4 acute public hospitals
  - Sunshine (~700) > **Footscray (~300)** > Williamstown (~90) > **Bacchus Marsh (~60)**
- Other hospital and community-based healthcare centres
  - Sunbury Day Hospital, Melton Health & Community Services, Bacchus Marsh CHC, Caroline Springs CHC and Grant Lodge Residential Aged Care in Bacchus Marsh
  - Custodial Health at Ravenhall's women's prison (Dame Phyllis Frost Centre)
- A dynamic community being one of the most culturally diverse in Victoria, with 900,000 people in our catchment. More than 150 different languages spoken in the area
- **Expansion: Sunbury, Melton, New Footscray, Point Cook Community Hospital**
- Pharmacy Service & Pharmacy Department Expansion (including Automation)
- This means working with modern facilities, technologies & career prospects



Footer Text



**Rapid Growth & Opportunity**

# Western Health Values

**Compassion** - consistently acting with empathy and integrity

**Accountability** - taking responsibility for our decisions and actions

**Respect** - for the rights, beliefs and choice of every individual

**Excellence** - inspiring and motivating innovation and achievement

**Safety** - prioritizing safety as an essential part of everyday practice





# Why choose Western Health ?

- A teaching hospital that fosters a supportive environment to develop essential clinical, critical thinking and team works skills required as registered pharmacist
- Electronic Medical Records (Cerner EMR) since November 2018
- Great opportunity to gain valuable experience from specialist pharmacists
- Employee benefits:
  - Salary Packaging
  - Fitness Passport and onsite gyms
  - Superannuation
  - Employee Counselling Services
- Reward and recognition programs in place to acknowledge employees
  - INSPIRE, Employee Service, Best Care, Scholarship and Grants





# Sunshine Hospital Expansion Project (SHEP) (from end 2023)



With the recent growth in points of care at The Sunshine Hospital, our main Pharmacy has reached capacity. An expansion of the current Pharmacy footprint from 350m<sup>2</sup> to 800m<sup>2</sup> is being undertaken to support clinical operations. The expansion accommodates for growth in staff numbers, installation of Automated Dispensing Cabinets (ADC's) systems to automate many of the routine tasks and more efficiently store extensive stock holdings and the introduction of onsite medication manufacturing in an Aseptic Suite.



Nemo and Dory

Footer Text



Image: Pharmacy Automated Dispensing Cabinet (ADC)

# Sunshine Mental Health and Wellbeing Centre (from July 2023)

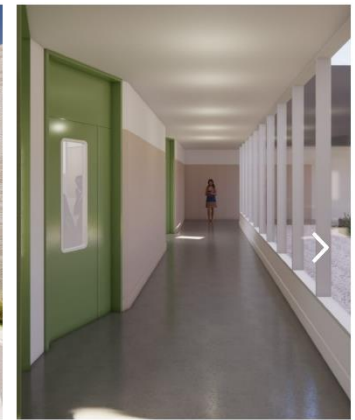
New 52 bed unit mental health facility



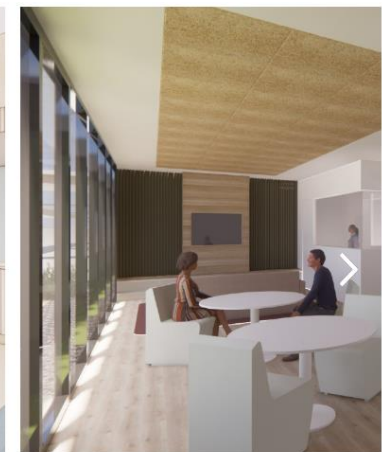
Artist impression of an aerial view of the new mental health facility at Sunshine Hospital.



Artist impression of the landscaping and exterior of new mental health facility at Sunshine Hospital.

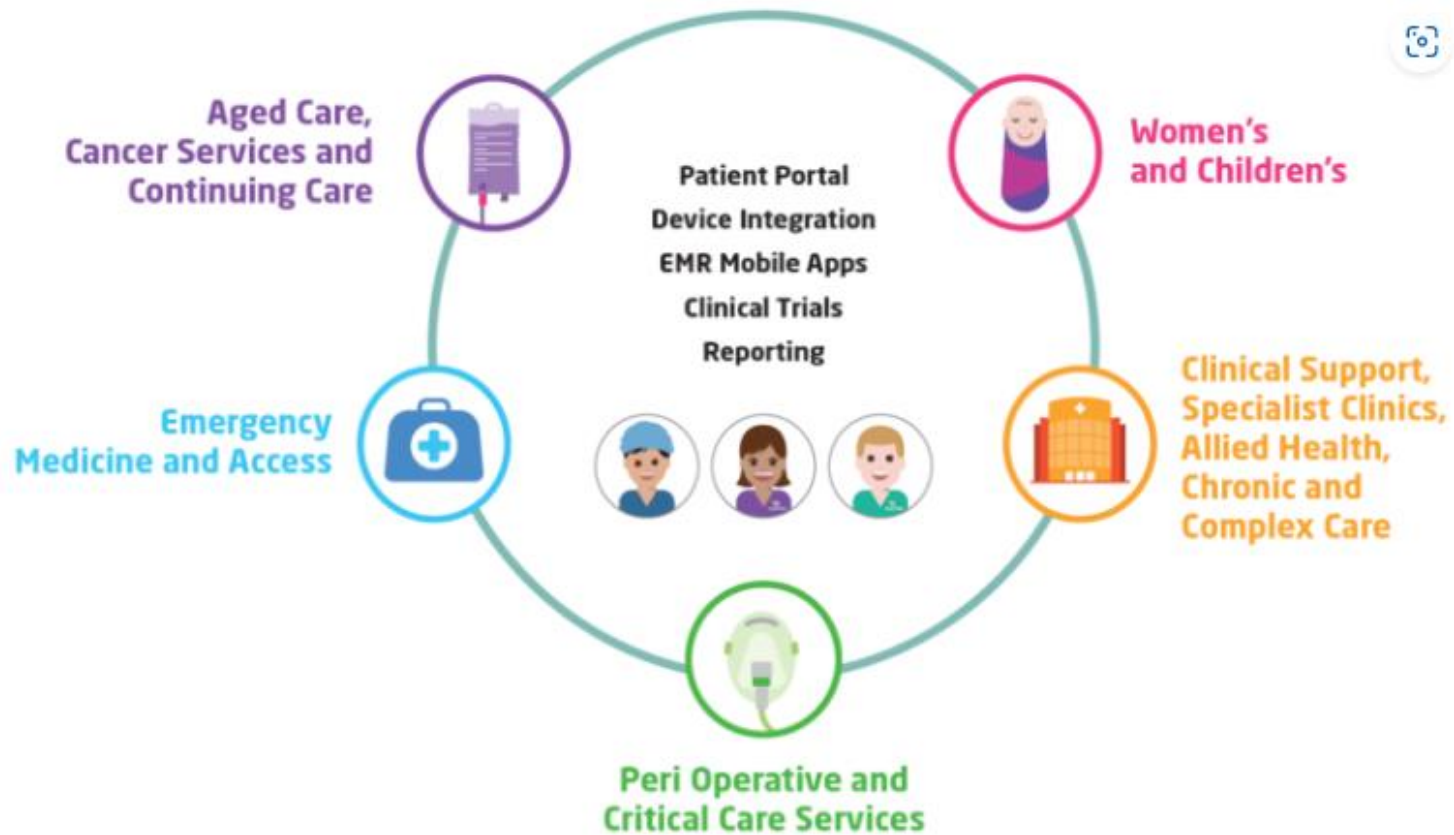


0310R



# EMR Phase 2.1

(from July-August 2023)







# Looking ahead... 2025



## A New Hospital for the West

Construction of your Footscray Hospital is now under way. The Victorian Government has committed up to \$1.5 billion to this new facility, being built at the intersection of Geelong and Ballarat roads in Footscray, in the largest ever health infrastructure investment in the state.

[→ Read more](#)



# Looking ahead...



- Melton is one of the fastest growing regions in Australia and the new Melton Hospital will be managed under Western Health.
- Expected to open in 2029
- **Strategic plan includes goals such as:**
  - Growing and improving the delivery of safe care, high quality care
  - Communicating with our patients, partners and each other
  - Valuing and empowering our people



# Social Calendar – Pharmacy Games





# Pharmacy Internship Program

- **7 intern positions available (5 DHHS & 2 self funded)**
- **Rotations primarily based across Footscray and Sunshine**
- Tutorials held once weekly (1.5hrs) with a focus on case studies, drug knowledge and application of knowledge in clinical scenarios with pharmacist in specialty areas and/or pharmacy preceptors
- Preparation dedicated to written exam and oral examination
- Intensive training week conducted before clinical and manufacturing rotations
- Rotations are 4-5 weeks at a time and are mix of clinical and operational
  - Operational: Manufacturing, Inpatient Dispensary and Outpatient Dispensary
  - Clinical: Coronary Care, Surgical, Respiratory, Aged Care, General Medical, Neurology, Pediatrics & Maternity\*\*\*





# Pharmacy Internship Program

- Western Health specific competency assessments are utilized to ensure appropriate intern training program requirements are met.
- Western Health Pharmacy supports the Monash Intern Foundation program (IFP) and Monash Intern Training Program (ITP)
- **Other multidisciplinary activities:**
  - Antimicrobial Stewardship Ward Rounds
  - Acute Pain Management Service (APMS) Ward Rounds
  - Hospital Outreach Medication Reviews
  - Outreach Pharmacy
  - IFP Project Days
  - Medication Information



# Mentoring



Mentored by 7 pharmacist preceptors  
Social events e.g. dinners and drinks



# Exam Preparation & Job Opportunities (end of intern year)

- Preceptor led study & exam preparation
- Early information about the both Australian Pharmacy Council written exam & Pharmacy Board oral exam
- Practice oral exams (approx. 5-6) with pharmacists across the department
- APC study day
- Job opportunities



# Our 2024 Pharmacy Interns





# Visit our Pharmacy Careers Page



<https://www.westernhealth.org.au/Careers/Pages/Pharmacy.aspx>



Information available on our website:

- Pharmacy Internship Program Brochure
- [Internship Frequently Asked Questions \(FAQ's\)](#)



# FAQ's

## Do you accept international student applications for the 2 hospital funded positions? **2. Am I eligible to apply for the positions?**

There are three eligibility groups for the available Government and hospital self-funded intern positions

Group	Definition	Can apply for
1	Australian and New Zealand citizens and permanent residents who are also graduates of Victorian Pharmacy programs	All positions (government and hospital self-funded) from round 1
2	Australian and New Zealand citizens and permanent residents who are graduates from all other programs	- Hospital self-funded positions from round 1 - Government funded positions from round 3
3	All other applicants	- Hospital self-funded positions from Round 1 - Not eligible for government funded positions

Applicants from groups 2 and 3 who completed their pharmacy qualifications in any country other than Australia, Canada, Ireland, New Zealand, the UK or the USA will be required to submit a skills assessment letter from the Australian Pharmacy Council to confirm their eligibility to work in Australia.

Overseas students completing their degree at a Victorian University will be required to submit a letter stating that they are in their final year at a Victorian University. SHPA reserves the right to confirm this with the relevant university.

# FAQ's

## **When does the intern program start?**

In the first week of January (Monday 6th January 2025 – TBC)

## **Who can I contact if I have further questions?**

Email: Julie Vi; Senior Education Pharmacist and Intern Coordinator  
([julie.vi@wh.org.au](mailto:julie.vi@wh.org.au))



# Time for Questions?

- Start dates?
- Leave entitlements?
- Specialty Pharmacists?
- Resident Training Program?
- Tours?
- Culture?



## Contacts:

Senior Education Pharmacist / Intern Coordinator

**Julie Vi**

[julie.vi@wh.org.au](mailto:julie.vi@wh.org.au)

Intern Preceptor  
**Wen Jian Pang**

[Wen.Pang@wh.org.au](mailto:Wen.Pang@wh.org.au)



# Further links on Western Health

## About us:

<http://www.westernhealth.org.au/AboutUs/Pages/default.aspx>

## Our sites and services:

<http://www.westernhealth.org.au/OurSites/Pages/default.aspx>

## Pharmacy:

<http://www.westernhealth.org.au/Services/Pharmacy/Pages/default.aspx>

## Pharmacy careers page:

<https://www.westernhealth.org.au/Careers/Pages/Pharmacy.aspx>

## Facebook:

<https://www.facebook.com/westernhealthau/>

## Instagram:

<https://www.instagram.com/westernhealthau?igsh=ZjlzNngwcG11aXcy>